

**Church at Worship** 9:00 & 11:45 a.m. Services

Video Announcements

Prelude *Variations on "Christians, We Have Met to Worship"*  
Raymond H. Haan

Pastoral Welcome Adrian Pressley

Hymn of Praise *O Worship the Lord* J. S. B. Monsell

Prayer Doug Mace

Tithes and Offerings Local Church Budget Ernie Castillo  
(Loose offerings go to church budget.)

Offertory *There Is a Fountain* arr. Greg Howlett

Lamb's Offering  
(Lamb's offerings go to Education-LLA Support.)

Children's Feature Chris Johnston

Baptism Ethan Schmidt Chris Stanley<sup>†</sup>  
Sandra Schmidt

Anthem *United in His Love* Cindy Berry

Meditation<sup>4</sup>

Scripture Reading 2 Corinthians 5:11-21, NIV Christie Winter

Sermon **Sanctification** Miguel Mendez  
*Remedial* (part 4 of 4)

Closing Prayer Miguel Mendez

Postlude *Toccata on "Amazing Grace"* Christopher Pardini

**Worship Service Participating Musicians**

Nick Ault, Patty McGhee, Calvin Thomsen, Helme Silvet, choristers  
Adriana Perera, piano; Kimo Smith, organ & piano  
Sanctuary Choir; Brenda Mohr, conductor

**Upcoming Camp Meeting Series**

July 29 - Sept. 9



**Heaven Cares**  
*The Tender GOD of the Apocalypse*

Revelation—Merely mention the book and conflicting emotions erupt. Delight! Distress. Courage! Cowardice. Hope! Horror. No other Bible book creates such responses. "Revelation?" Doesn't that mean an unveiling? "The revelation of Jesus Christ?!" Doesn't that promise comfort and assurance? Yet, simply perusing the book creates more confusion than clarity, more fear than faith. Could it be that we have missed something—something compelling and profound? Could it be that lost in beasts and chaos, confusion and destruction, we have missed the tender God of the apocalypse? The God revealed in Jesus? Blow the dust off the book. Crack open its pages. Pray. And steel yourself to encounter . . . the wounded Lamb. Jesus. The One who cares about you!

The tender God of the Apocalypse.

**Together in Prayer**

JOIN US! Every Sabbath our Prayer Room (room 102, south side of church) is open between 10 and 11:30 a.m. You may also submit your prayer requests or comments any time at lluc.org. And call in our daily 7 a.m. prayer line family by dialing (909)361-6220, enter ID number 11125#.

Assisted listening devices are available to check out from the deacons' room.

Questions or Comments: [www.lluc.org](http://www.lluc.org)

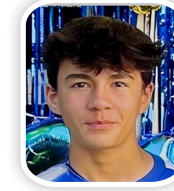
Church Office Hours: M.-Th., 8am - 4pm ; F., 8am-noon. Closed Tu., 8:30-9:30am

**Anthem Modern Service**

Auditorium

10:00 & 11:30 a.m. Services

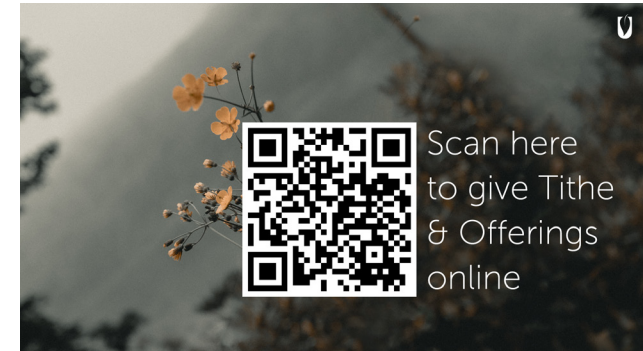
**Baptisms**



**Ethan Schmidt** has chosen to be baptized and to give his life to Jesus. He is a student at Loma Linda Academy. He loves sports, hockey, fishing, and spending time with friends and family.

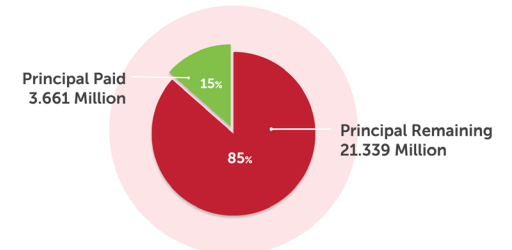


**Sandra Schmidt** believes that her baptism reflects her personal growth, clarity in beliefs, and a profound desire to align herself with chosen religious community. Her baptism will symbolize her dedication to living a more purposeful and faithful life.



Scan here  
to give Tithe  
& Offerings  
online

**GRAPH OF 25 MILLION BUILDING LOAN**



## Church & Community Life

**LLUC/UREACH Quilters:** Our dates for meeting this month are Sunday, July 23, and Monday, July 24, in room 105 from 9 a.m. to 3 p.m. with a potluck each day. Please help prepare quilts for NICU and SACH clinic. NO EXPERIENCE IS NEEDED for machine sewing and tying of quilts. Donations can be given to the church office marked "Quilters." Children's and plain colored cotton fabric and 100% cotton batting is always needed. For any questions, call Jody Rogers at (626)774-6935.

**Loma Linda University Church Pathfinder Ministry for the 2023-2024 season:** If you have a child ages 10 to 15 years, you are invited to register your child with the LLUC Pathfinder Club. Sign up will be open during the months of July and August at lluc.org. The first meeting is scheduled on August 26. For questions, email lluc.pathfinders@gmail.com.

**Steve Green Concert:** The performance will include the Worship Leadership mass choir and the LLUC Children's Choir on Friday, August 11, at 7 p.m. in the Sanctuary. Enjoy a worshipful uplifting experience. Concert tickets are \$7 per person and are available at lluc.org.

**UReach Ministries is looking for several volunteers** to help with its Transit program and its Meals-on-Wheels program. Transit is a taxi service for seniors in this community, driving them to nearby locations. Transit drivers are needed Tuesday mornings 8 a.m.-12 noon (preferably every week, possibly every other week), using the ministry car. Meals-on-Wheels delivers hot vegetarian meals to local seniors. Drivers will use their own cars every other Wednesday, loading between 9 to 10 a.m. and delivering from 10 a.m. to 12 noon. Please call (909)796-8357 to become a volunteer.

**Children's Choir Fall Registration** Hey, kids! The children's choir wants YOU! Ask your parents to sign you up at lluc.org from August 1 to 31. Sign up for Cherub Choir (kindergarten to 3rd grade) or Junior Choir (4th to 8th grade). The first rehearsal for Cherub Choir is scheduled for September 8.

**Praxis Ministry invites all young adults** (ages 18-35) to our 10 Weeks of Summer social events through August 26! On July 22, we will be hosting an International Food Potluck on the Rooftop Terrace from 8 to 9:30 p.m. Bring a friend and an international dish to share!

**Join the camp meeting season by watching the Quakes baseball game** August 13 at 5 p.m.! Our LLUC group tickets will be seated together. Sign-ups close August 6 for the group sales, but day-of tickets are available at the Rancho Cucamonga Quakes stadium. Buy your LLUC group tickets at fevogm.com/event/Lomalindauniversitychurch.



## Calendar of Events

|                                       |  |
|---------------------------------------|--|
| Sunday, July 23<br>1:30 p.m.          | Dementia Caregivers Support Group, room 102  |
| Tuesday, July 25<br>5:30-7:00 p.m.    | Experiencing God Bible Study, Zoom meeting, ID 985 953 81381                                   |
| 6:30-8:00 p.m.                        | Experiencing God Bible Study, Zoom meeting, ID 531 952 429 or call (669)900-6833               |
| 7:00 p.m.                             | Divorce Care, room 1402  |
| Wednesday, July 26<br>6:00 p.m.       | Open Prayer Circle, room 102   |
| Friday, July 27<br>7:00 p.m.          | Q & A with Pastor Miguel, auditorium   |
| Sabbath, July 29<br>9:00 & 11:45 a.m. | "Heaven Cares About Our Community," <i>Heaven Cares</i> (part 1 of 7) Randy Roberts, Sanctuary |
| 10:00 a.m.                            | Praxis Young Adult Sabbath School, Family Ministries Bldg lower level, room 0402               |
| 10:00 & 11:30 a.m.<br>4:00 p.m.       | Anthem Modern Service, auditorium<br>Jon Paulien, Sanctuary                                    |



## Membership Transfers

### Incoming

|   |   |
|---|---|
| Aaron A. Alonso<br>Redlands Spanish Company, CA | Rakesh Nowrangi<br>Sligo, Takoma Park, MD |
|---|---|

|                               |                               |
|-------------------------------|-------------------------------|
| Jill Bradford<br>Calimesa, CA | Darlene Tyler<br>Calimesa, CA |
|-------------------------------|-------------------------------|

|   |   |
|---|---|
| Jesse D. Churchill<br>N. Hill Adventist Fellowship,<br>Edgewood, WA | Gaea Jamine B. Umali<br>Inland Empire Filipino,<br>Redlands, CA |
|---|---|

|  |   |
|--|---|
| Raffaella Dias<br>Azure Hills, Grand Terrace, CA | Richard Weiss<br>Azure Hills, Grand Terrace, CA |
|--|---|

|   |  |
|---|--|
| DeAnna & Robert E. Dunn<br>Calimesa, CA | <b>Profession of Faith</b><br>Camedon Miller |
|---|--|

|   |  |
|---|--|
| Idamae Jenkins<br>Ethan Temple, Clayton, OH | Deanna Miller<br>Sharon Rojas<br>Emelyn Whittemore |
|---|--|

Juliane Johnson  
Mission Road, Redlands, CA

### Outgoing

|  |   |
|--|---|
| Grace Jieun Chung<br>Loma Linda Korean, Redlands, CA | Sandra K. Reiber<br>Granite Bay Hilltop, CA |
|--|---|

|                          |                              |
|--------------------------|------------------------------|
| Sunset Today - 7:57 p.m. | Sunset Next Week - 7:52 p.m. |
|--------------------------|------------------------------|